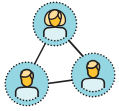


Assessment-capable visible learners know their current level of understanding. In order for you to determine your current level of understanding, you need to know and internalize the learning intentions and **success criteria** for the lesson. Sometimes, as the teacher, I need support in determining what the success criteria for a lesson are. And what better support than all of you! Today, we are going to co-construct our lesson's success criteria. Which means that as a class we are going to collectively figure out what you would need to show evidence of to prove you have mastered the learning intention.

Before we look at our learning intention(s), let's practice creating success criteria for a different scenario.

Learning Intention and Success Criteria	
<b>Learning Intention:</b>	After reading Chapter 6 of <i>Animal Farm</i> , describe the contradictions in Napoleon's actions and words.
<b>Success Criteria:</b>	What would you need to be able to do as evidence that you mastered the learning intention? <i>Come up with at least three success criteria.</i>



## Co-constructing Success Criteria

Date: \_\_\_\_\_

<b>Today's Learning Intention(s):</b>	
<b>Success Criteria:</b>	What would you need to be able to do as evidence that you mastered the learning intention(s)?

Now that we've taken the time to co-construct success criteria for our learning intention(s), think about the following questions:

1. What will be something that is challenging for you?
  
  
  
  
  
  
  
  
  
  
2. What will be something you can easily do?